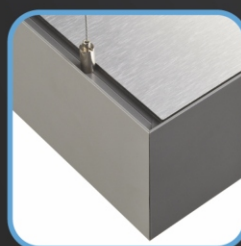
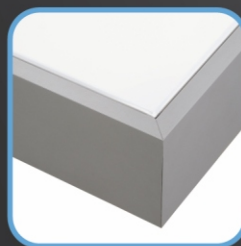
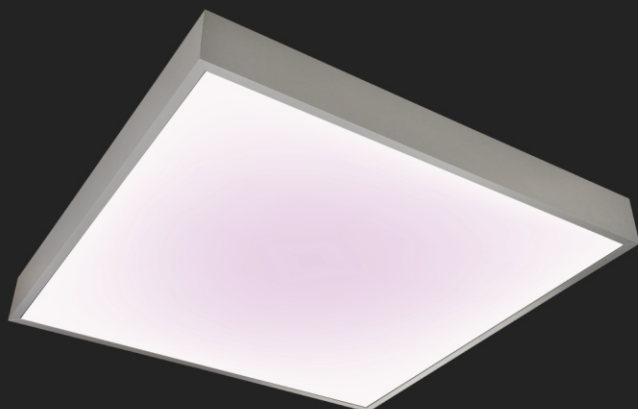
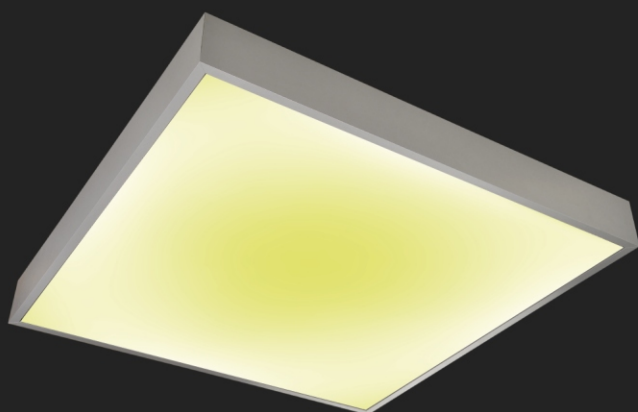
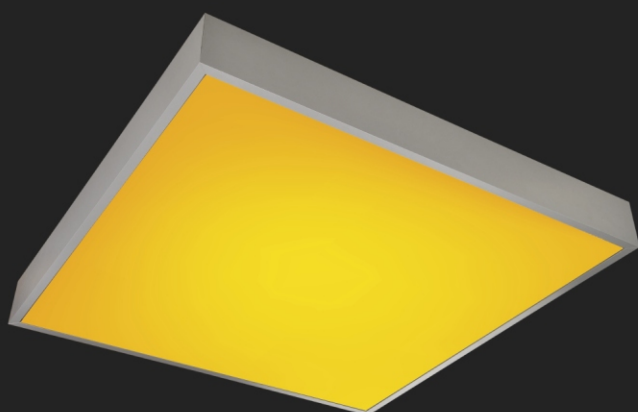
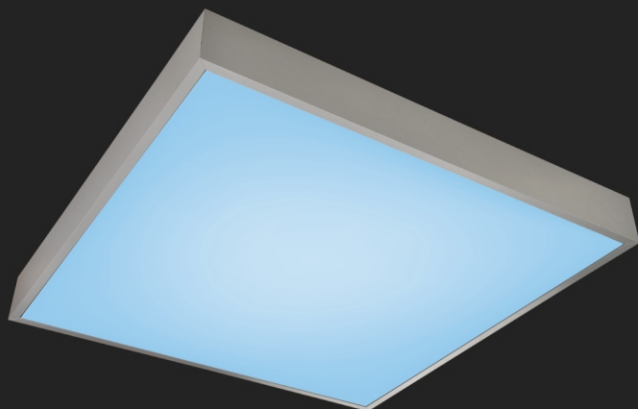


# LUME DPS®

## Quadrat

Quadrat light panel is a unique proposal dedicated to demanding customers who appreciate aesthetics, functionality and top quality design. Quadrat series provides solutions to areas characterized by modern design. Materials used to production are best available at market; aluminum frames provides anodizing possibility as well as powder coating. We use accessories from reputable companies, LED technology and a special DPS membrane dispersing the light. Quadrat production technology allows to use panels in range of 0,65m up to 2,4m side length, assuming that thickness of light panel is just 11cm. Our product meets the highest standards therefore we offer user versions as well as decorative versions supplied with LED RGB. Quadrat light panel is a complete solution in terms of installation. Product includes equipment necessary for installation, furthermore it provides easy access in case of service works.





# LUME DPS®

**Standard dimensions:**

650mm/650mm/110mm  
950mm/950mm/110mm  
1250mm/1250mm/110mm  
1550mm/1550mm/110mm

**Custom sizes:**

650mm up to 2400mm side length  
Height 110mm

**Light source:**

SMD LED or T5 bulb

**Power:**

650 – LED 32W or T5 4x24W  
950 – LED 72W or T5 4x39W  
1250 – LED 134W or T5 4x54W  
1550 – LED 202W or T5 4x80W  
Custom light versions available

**Installation:**

„Hanger“ or „Founded upon“

**Material:**

Extruded aluminum

**Color:**

*Anodizing* – silver, gold, brown, black  
*Painting* – white, silver, black, red  
Custom color versions available

**Optics:**

Opal film with a higher degree of scattering

**Control:**

Standard/remote control/DIM

**Power supply:**

220-240V  
0/50-60 Hz

For IP20 internal use

[www.lume.com.pl](http://www.lume.com.pl)  
[www.grupadps.com](http://www.grupadps.com)